

2020 ANNUAL REPORT

The Year of Hope



PROVIDING HOPE TO OUR YOUTH

Going virtual in 2020 gave us the ability to reach more people than ever. We saw an incredible increase in youth attendance from virtual camp programs to the Young Leaders Network.

525

High school and college-aged people meet for friendship, fun, and skill building! The Young Leaders Network experienced a 40% growth to 525 participants this spring.



133

The Foundation provided 11 virtual summer camps to 133 campers in 2020.

HALLOW-HUNT-A-THON

408



Foreseeing a disruption in Halloween festivities we launched a community program that featured scavenger hunts in 15 New England parks as well as daily challenges that culminated in a celebration costume party on Halloween.

The program was free and we had 408 participants.

HOPE FOR COMMUNITY

Our community is the heart of Epilepsy Foundation New England. Since going virtual, we have offered educational services, SHARE groups, and emergency assistance programs to more people this year than ever before. The pandemic can't stop us from providing help for today, hope for tomorrow.

EDUCATION

Our Community Education program includes two webinars a month and conferences three times per year.

Updated My Friend Matty material and educational services introduce epilepsy to small children, including in the virtual environment. A virtual book is also available.



We are creating an on-demand library. We have extensive training for children and school teachers. We have several people certified in seizure first aid training and can deliver services via zoom.



Offering seizure first-aid training twice a month virtually to anyone who is interested.

In addition, we have a special program for small children called My Friend Matty to introduce epilepsy education at a young age.

SHARE stands for Share, Hope, Advocacy, Research, and Education. We offer specialized groups to fit anyone's needs.

37

SHARE

Our SHARE groups are all virtual, and we've seen climbing attendance during the pandemic.

Visit: epilepsynewengland.com/events

There are a wide variety of groups that include a 55+ Group, a young men's group, a group for people who have become seizure-free and are coping with their new identity, parents, and so much more.

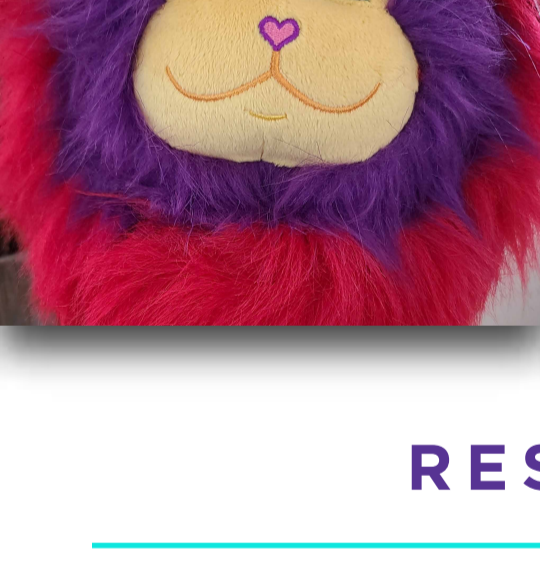
65

The Emergency Financial Assistance Program serves about 65 families a year with one-time grants of \$50 - \$1,000.

EFNE now offers 37 virtual groups each month.

INTRODUCING HOPE

Hope the Lion is designed to help newly diagnosed families connect to the Foundation - and literally gives something for children and families to hold onto - a plushie lion. The lion was delayed by the pandemic but many children and adults are interacting with Hope, who has an active presence on all social media channels. Hope the Mascot makes appearances on social media, at virtual walks, and in our youth programs.



Hope has reached 350 families so far this year. Although the Hope the Lion plushie has not arrived yet, Hope has been in our hearts forever.

350

RESOURCE ROOMS

An Epilepsy Resource Room is an area in/near an Epilepsy Center or hospital, staffed by 1-3 AmeriCorps Service Members; some "rooms" may have actual "rooms;" some "rooms" may be an area in the waiting room; some "rooms" will be flexible in daily availability. Currently, all programs are virtual.

17

We are currently offering 17 Resource Rooms throughout MA & NH. EFNE hopes to expand to ME and RI next year.

RESOURCE ROOM LOCATIONS

- Adaptive Sports Partners of the North Country - Franconia NH
- Baystate Medical Center - Springfield MA
- Beth Israel Lahey - Boston
- Boston Children's Hospital
- Boston Medical Center (adult and pediatric)
- Dartmouth Hitchcock Medical Center - Lebanon, NH
- The Laura Foundation for Epilepsy and Autism - Madison, NH
- Little Angels Service Dogs - Bartlett, NH
- Massachusetts General Hospital - Boston (adult and pediatric)
- Mass General Brigham - Boston
- Touchstone Farm - Southern NH
- Tufts Medical Center - Boston (pediatric)
- UMASS Memorial Medical Center - Worcester, MA (adult and pediatric)
- EFNE Virtual Resource Room - Regionwide

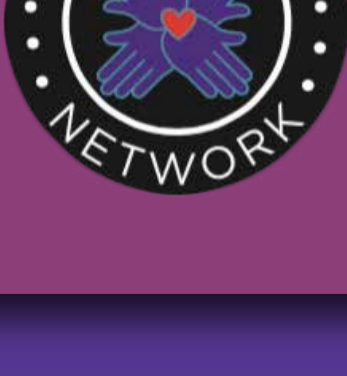


31



The Epilepsy Resource Room model launched on August 31 with approximately \$530,000 in FY21 federal funding in MA and NH.

\$530,000



\$125,000

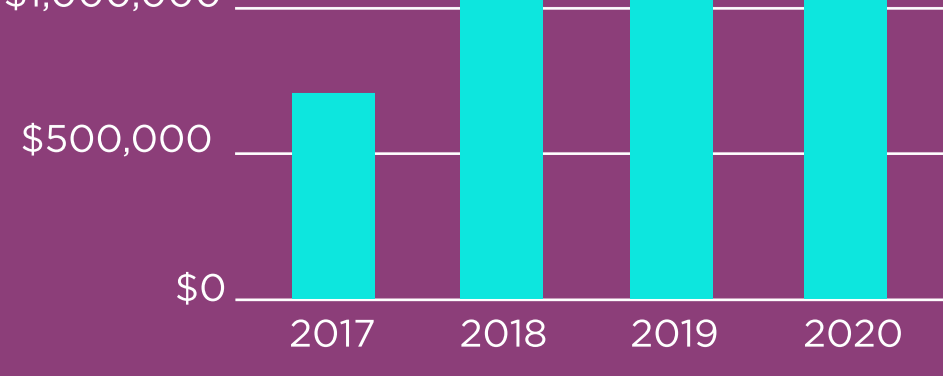
Hundreds of volunteers help Epilepsy Foundation New England each year.

Volunteers will contribute an estimated \$125,000 in service to the foundation this year.

THE NUMBERS

Donations and grants this year have allowed Epilepsy Foundation New England to expand all services and programs. 2020 has been a record year* exceeding our goals. Thanks to our community, EFNE has received \$1,268,814 in endowment and the endowment has surpassed \$5,000,000. We were able to donate \$136,840 to fund research in epilepsy. * Numbers are based off of FY20 - July 1, 2019 - June 30, 2020

DONATIONS TO THE FOUNDATION



VALUE OF EFNE ENDOWMENT



DONATED TO RESEARCH

\$136,840